



**MINISTRY
VENUES**



CONTENTS

- 01 — INTRODUCTION
- 02 — SPACES
- 03 — DIMENSIONS
- 04 — FIND US
- 05 — CONTACT

WELCOME

Remarkable Spaces.
Exceptional Events.

We are Ministry Venues. Since 1991, we've been hosting events that leave a lasting impression. We're ready to welcome you to one of our three sites across central London: each a blank canvas boasting an array of spaces where your vision can come to life.

Our specialist team possess the energy and expertise to ensure things run smoothly from start to finish, no matter the shape or scale of the occasion – from conferences to catwalk shows, work meets to weddings. Ministry Venues is where three decades of industry heritage and euphoric history collide to create experiences your guests will never forget.



THE MINISTRY - BOROUGH



Situated in Borough, The Ministry is a converted Victorian factory, revitalised as a contemporary central London workspace.

Though the industrial charms of the original building have been retained, the venue has been modernised with 9 exceptional indoor and outdoor spaces available to hire for a wide range of bespoke events, complemented by super-fast Wi-Fi and a fully stocked, wall-to-wall, 11m bar. The truly versatile collection of rooms boasts a total standing capacity of 400.



Team-building conferences, awards shows, brand activations – even Christmas parties and weddings – our specialist events team are on-site for any occasion.

From an intimate media studio to a vast blank canvas event space to meeting rooms bathed in natural daylight, you can book each part of The Ministry individually or hire out the entire venue as one exclusive package.

SPACES

- THE WHITE SPACE
- THE MEETING ROOM SUITE
- THE BAR & GARDEN
- THE LOUNGE
- THE STUDIO
- THE GYM
- BOX

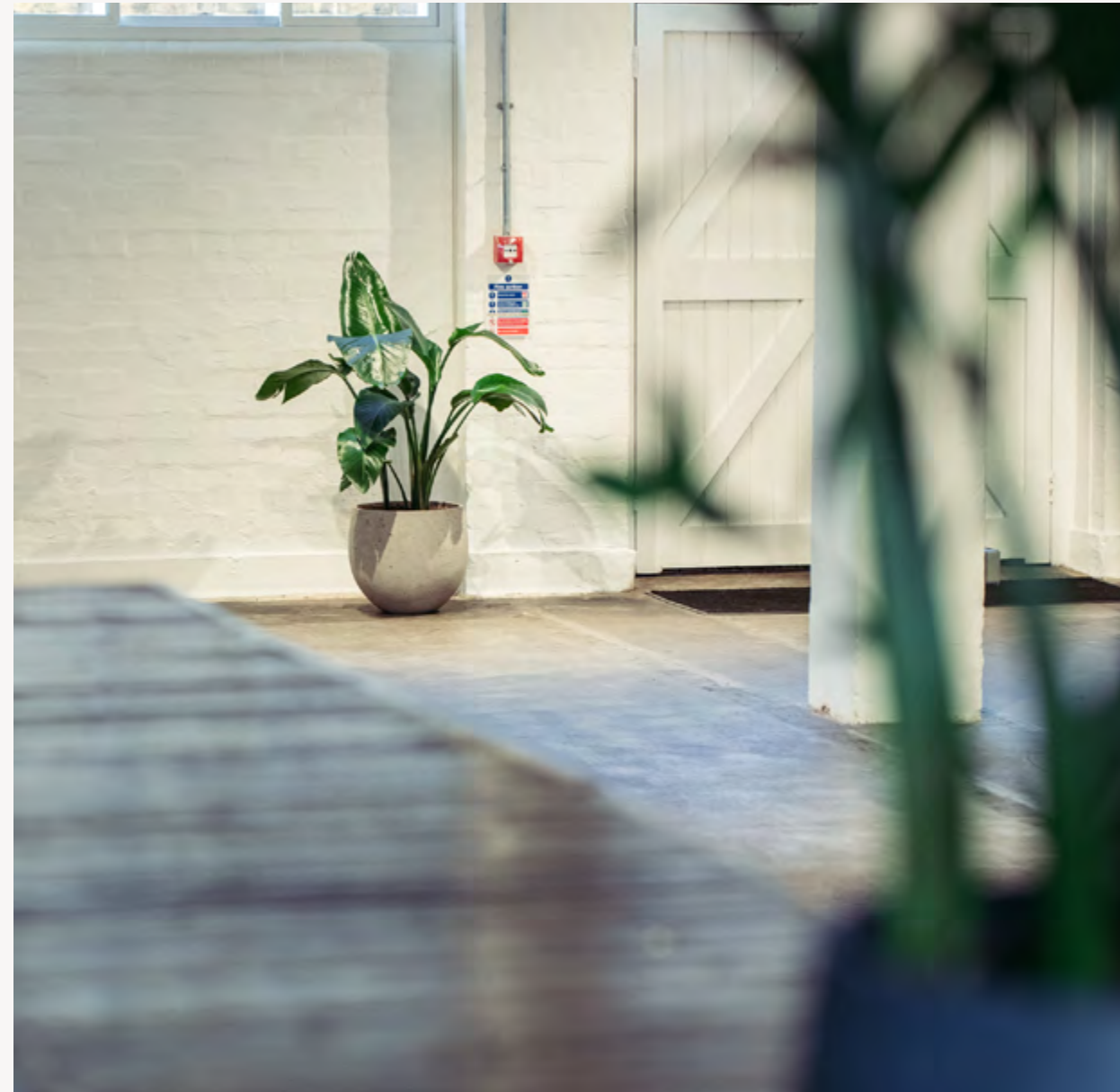
THE WHITE SPACE



THE WHITE SPACE

The very definition of a blank canvas. The White Space has a clean, modern design and versatility to host whatever kind of event you wish to throw at it – from brand activations and art exhibitions to jubilant wedding ceremonies.

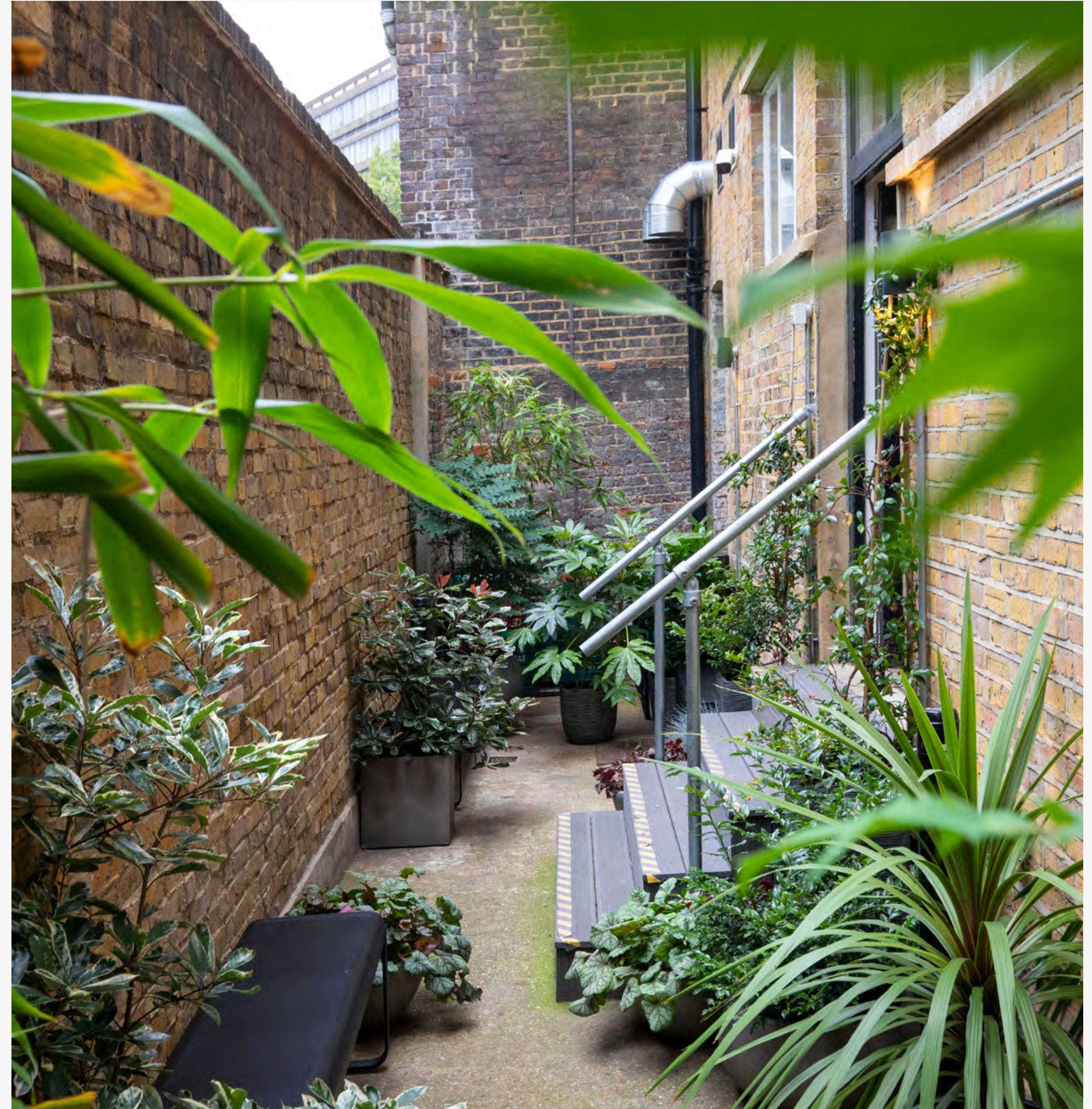
Its own dedicated entrance and an intimate courtyard can make The White Space feel like a standalone venue set apart from the rest of the building if hired separately, while it works brilliantly in tandem with The Lounge on evenings and weekends.





Bathed in daylight and equipped with top-notch lighting and sound systems, this dual aspect space can be used in full or divided up into smaller sections depending on the event. Simply put, The White Space can be whatever you want it to be.

- 100 Theatre
- 200 Standing
- 140 Banquet
- 195 m²



THE MEETING ROOM SUITE



THE MEETING ROOM SUITE

Our suite of three executive meeting rooms come equipped with everything you could possibly need – sound insulation, best-in-class AV, elegant Italian furnishings – to make a meeting run how you'd like it to – private, productive, smooth. For a special extra, take up the option to include our delicious in-house catering.

The Ministry offers 3 unique meeting rooms on the ground floor of the venue; The Kitchen & Dining Room, The Drawing Room, and The Study.





The Kitchen & Dining Room

— 16* Boardroom

— 46m²

The Study

— 10 Boardroom

— 19m²

The Drawing Room

— 10 Boardroom

— 25m²

The Study & Drawing Room

— 20 Boardroom

— 44m²



THE BAR & GARDEN



THE BAR & GARDEN

The Bar and Garden are The Ministry's best party spaces. The plush Italian furniture and fully stocked, wall-to-wall copper bar are permanent fixtures; the DJ booth and dancefloor optional, enjoyable extras.

Available exclusively at weekends, the bar's premium raw aesthetic is complemented by a sizeable heated outdoor garden that makes a perfect secondary social arena for a total standing capacity of 100.





Perfect for planning post-conference drinks, seeking a stunning backdrop for a TV or film shoot, or looking for a central London location for your wedding reception.

- 100 Standing
- 105m²

THE LOUNGE



THE LOUNGE

The elegant ambience of The Lounge is perfect for those seeking to throw a more refined corporate social or personal celebration. Available exclusively for weekend and evening hire, the space is set just off from The Bar, and comes equipped with a bar of its own, an array of customisable seating options and a number of private booths that can be fully curtained-off for added intimacy.

The Lounge works especially well when hired along with the adjacent White Space and is guaranteed to leave a lasting impression on a maximum capacity of 100.





- 100 Standing
- 100 Banquet
- 101m²



THE STUDIO



THE STUDIO

Sequestered downstairs in our basement, The Studio is a modern, comfortable space with acoustically treated walls, making it a popular choice for those seeking to produce audio or film content. Capable of handling a seated capacity of 10, the room benefits from wireless connectivity and an enhanced AV system. Interviews, podcasts, casting sessions, The Studio is equipped to handle all with ease.

- 10 Seated
- 21m²



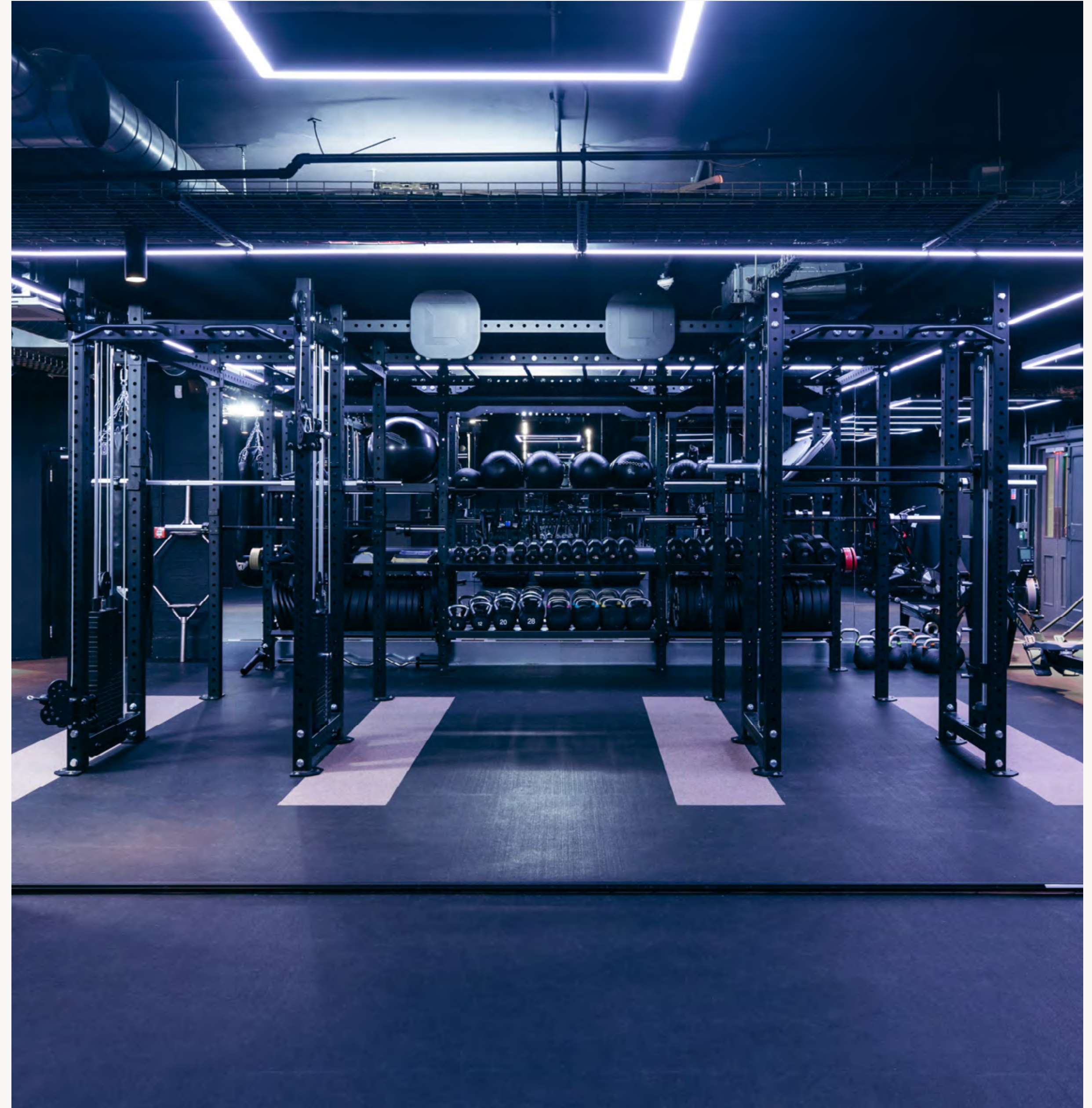
THE GYM & BOX |



THE GYM

Need an atmospheric central London gym setting for your music video, feature film, or TV series? The Gym is a dim lit gain-pushers' paradise of top-of-the-range equipment and fully customisable lighting. It boasts a free weights zone, a Soundsystem that is as good as you'd imagine, and a Hyperice recovery suite.

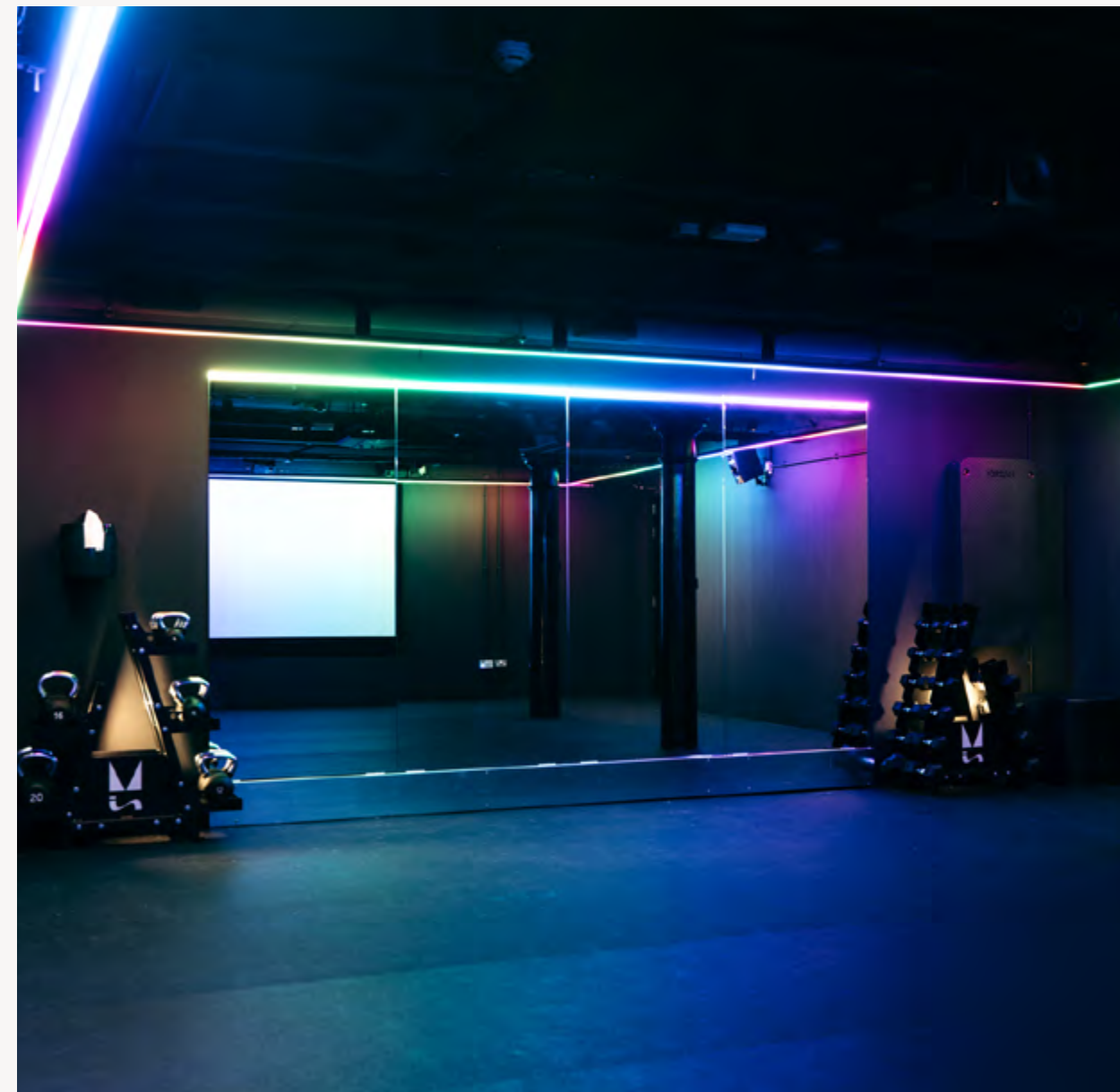
— 30 Standing



BOX

Typically used as a workout space, our Box is fitted out with a big-screen 4K projector and Dolby Surround Sound, which means it also excels as a cinema-style screening room and presentation studio. The ambience, floor-to-ceiling mirrors and customisable lighting also make it ideal for any mindfulness sessions you have planned for your guests, while it's frequently used as a set by camera crews shooting scenes for music videos, TV and film.

- 60 Standing
- 40 Theatre

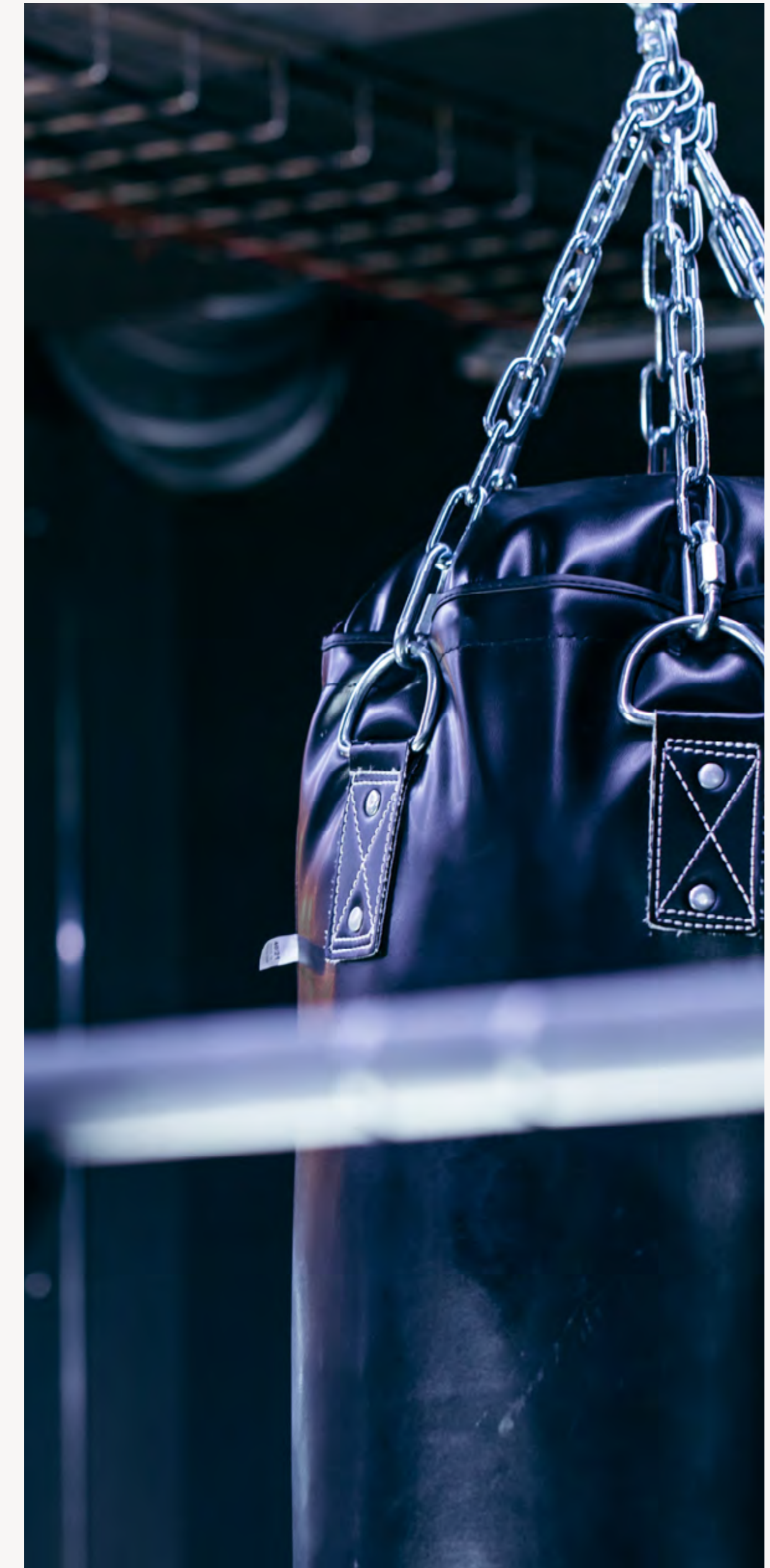




MINISTRY VENUES



THE MINISTRY - BOROUGH



VENUE BROCHURE

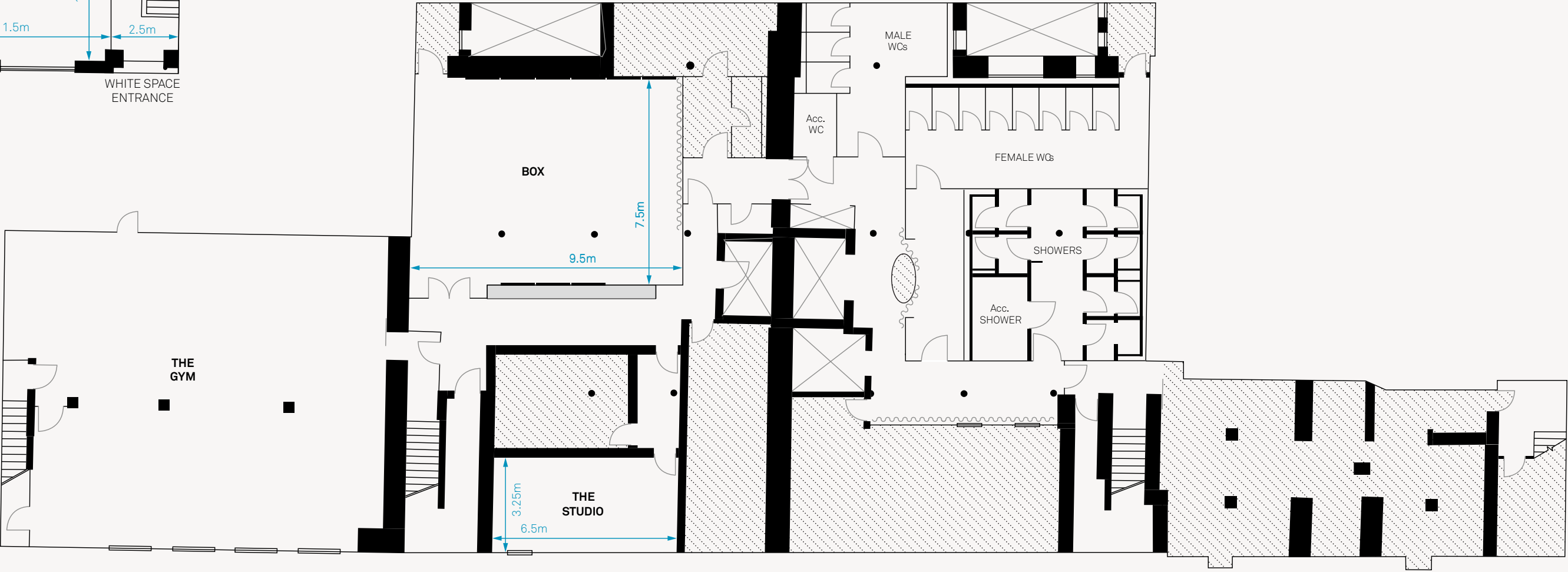
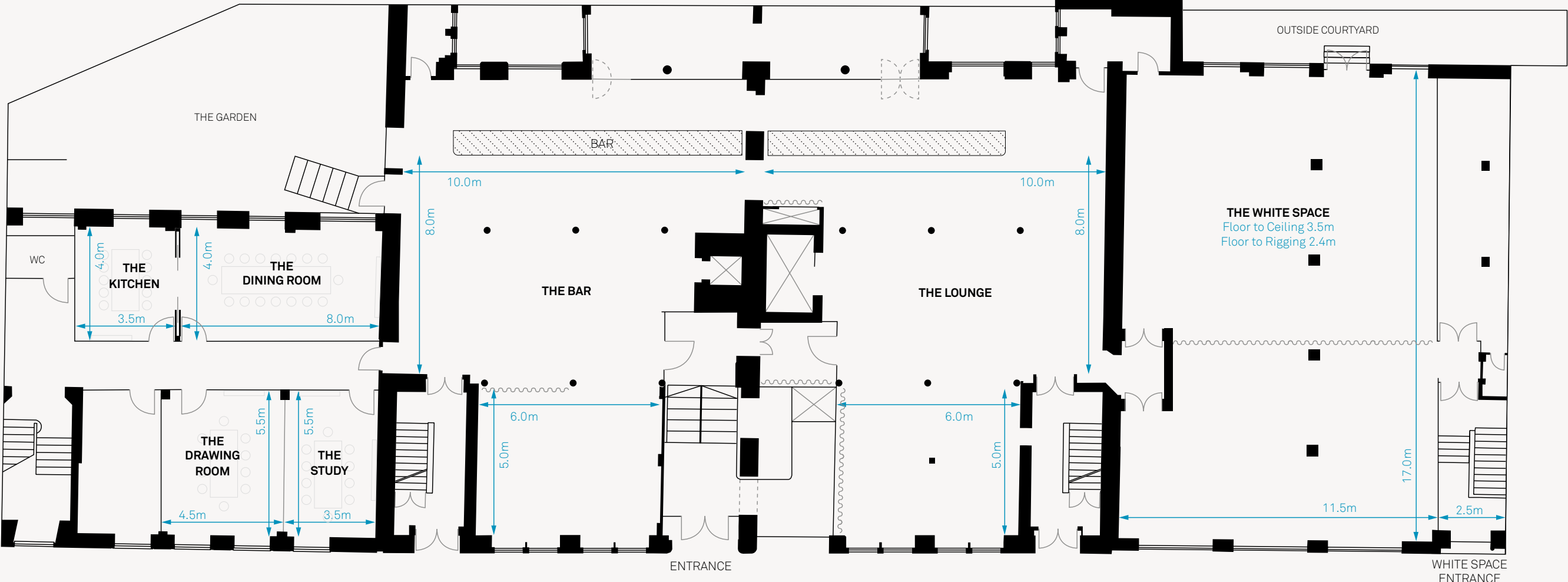
DIMENSIONS

- CAPACITIES
- FLOOR PLANS

CAPACITIES

Key Information			Area - Ft ²	Area - M ²	Standing	Theatre	Dinner	Boardroom
Maximum Capacity	400	The White Space	2104	195	200	100	140	—
Maximum Space	700 m ²	The Bar & Garden	1130	105	100	—	—	—
Power	3-Phase*	The Lounge	1087	101	100	—	100	—
License	7am - 2:30am*	The Kitchen & Dining Room	495	46	—	—	16	16*
		The Study	207	19	—	—	10	10
		The Drawing Room	266	25	—	—	10	10
		The Study & Drawing Room	473	44	—	—	20	20
		The Studio	227	21	—	—	—	10
		Box	766	71	60	40	—	—
		The Gym	950	88	30	—	—	—

FLOOR PLANS



FIND US

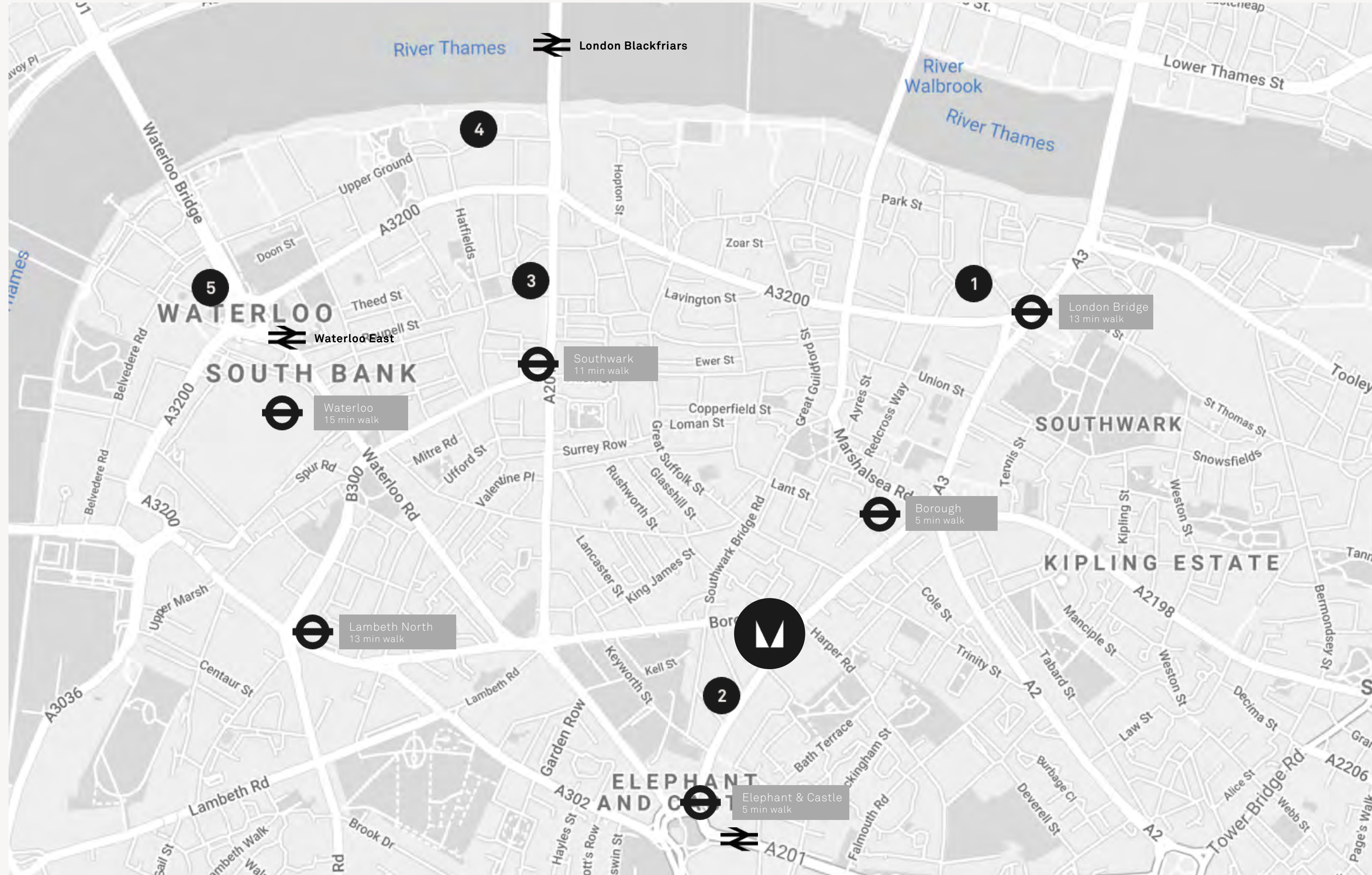
- 1 **Borough Market**
- 2 **Ministry of Sound**
- 3 **The Hoxton Hotel**
- 4 **Sea Containers**
- 5 **BFI Southbank**

Public Transport

- Cannon Street → 15 min
- Liverpool Street → 20 min
- Bond Street → 23 min
- King's Cross → 35 min

Areas

- Bank → 15 min
- Southwark → 20min
- Clerkenwell → 20min
- Canary Wharf → 25 min





**MINISTRY
VENUES**

79 - 81 Borough Road
London
SE1 1DN

MinistryVenues.com
Events@MinistryVenues.com
02077408682

@MinistryVenues